



**2/69 Newcastle Drive Pottsville NSW**

3 2 2

This private rear duplex represents an incredible opportunity to buy a modern, yet affordable family home in the popular and convenient Seabreeze Estate. With a practical floorplan which is spread across a single storey on an elevated and level block, this neat and tidy home is positioned to catch the ocean breeze and winter sun.

Comprising 3 large bedrooms, 2 bathrooms and a double lock up garage, the home has all of the modern conveniences we have come to expect including, air conditioning, led downlights, stainless steel appliances and gas hot water.

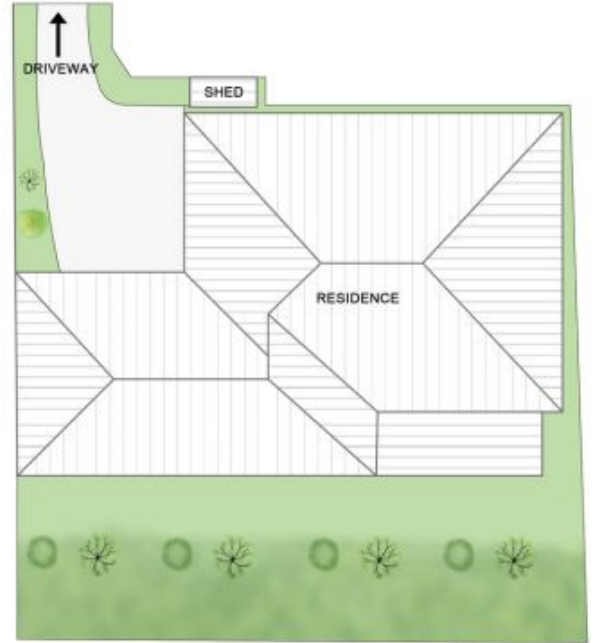
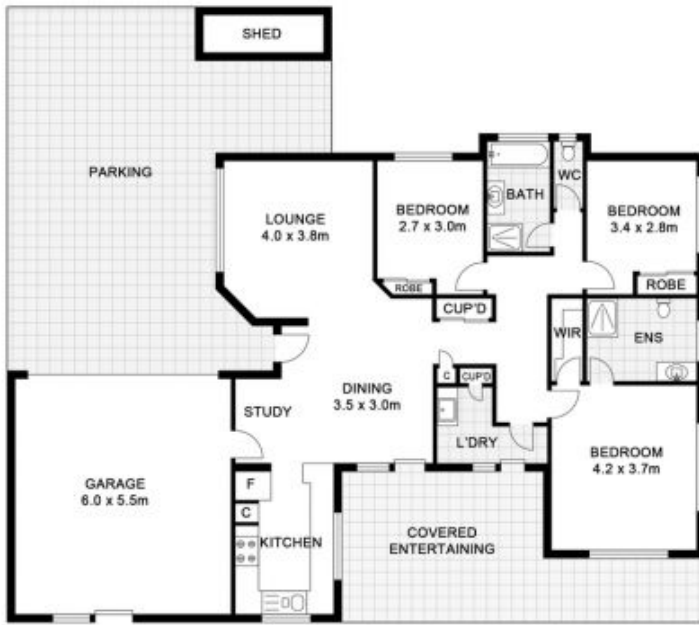
The semi-open plan kitchen, dining, and living areas greet you upon entry which overlook and open out to the rear,

[For full version visit the website](https://www.pottsvilleproperties.com)

**Type** : Semi Detached  
**Price** : \$ 850,000  
**Building Size** : 20 sqm  
**View** : <https://www.pottsvilleproperties.com/sale/nsw/northern-rivers/pottsville/residential/semi-detached/7637867>



**Shannon & Katie Kofoed**  
 02 6676 2997



SITE PLAN  
(NOT TO SCALE)

2/69 Newcastle Dr, Pottsville

Floor Plan Disclaimer: Media Drive (M2) floor plans / site plans are intended as an approximate guide only. No representations or warranties of any nature are given or intended and any person using this information other than as a guide should always rely on their own enquiries. Media Drive property marketing services / 0419070054 / Photography, Floor plans, Video, Aerial photography / www.mediaactive.com.au



Pottedsville Properties | McLeod

Internal: 144m<sup>2</sup>  
Excludes all external structures  
Eg. decks, patios, verandahs etc