



5/23-27 Coronation Avenue POTTSVILLE NSW

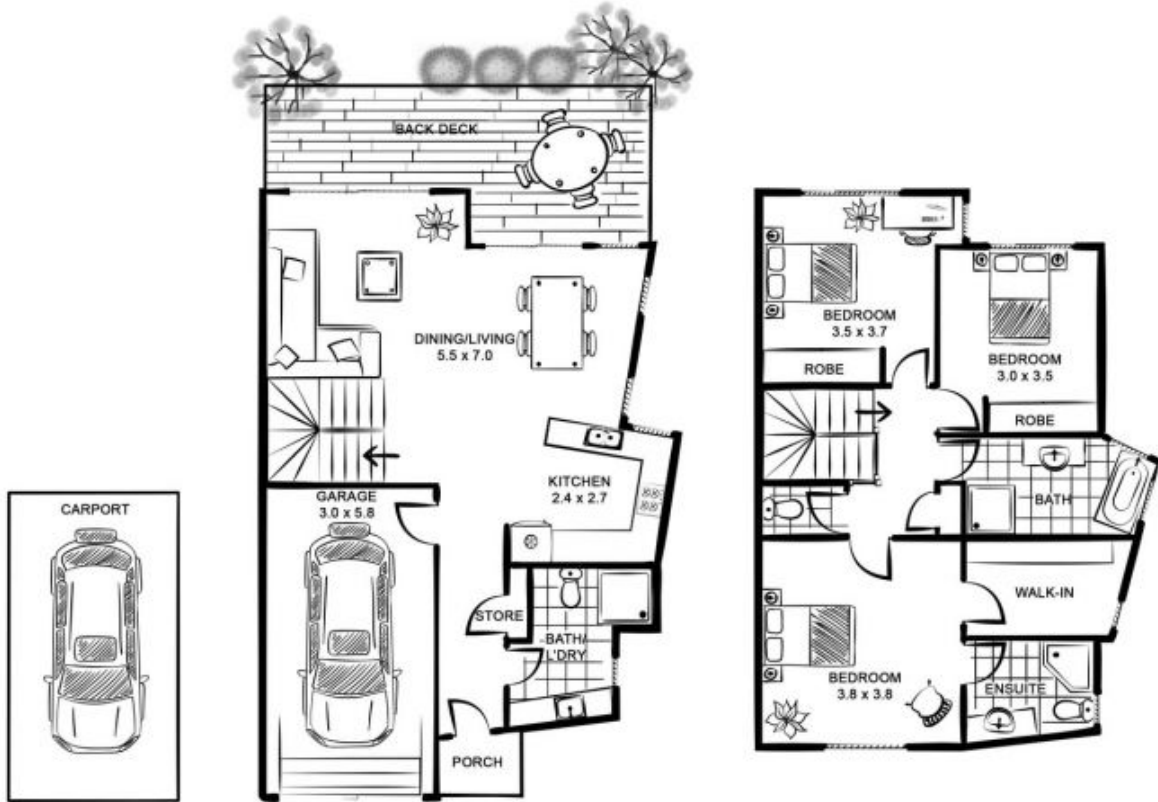
3 3 2

This terrific townhouse is truly a class above its competitors, with the village location and design features being equally impressive. Throw a towel over your shoulder, grab your morning coffee from one of the local cafes and walk footsteps to the ocean or estuary for a morning swim. Set amid tropical gardens in a small well maintained complex offering excellent returns to an astute investor or live the seachange lifestyle from this perfect property.

Type : Townhouse
View : <https://www.pottsvilleproperties.com/sale/nsw/northern-rivers/pottsville/residential/townhouse/7644992>

- Property Features and Inclusions
- Enormous Master bedroom, offering raked ceiling, large walk in robe & deluxe ensuite
 - 2 additional over-sized bedrooms with built in wardrobes & air-conditioning

[For full version visit the website](#)



5/23 Coronation Avenue

POTTSVILLE

Floor Plan Disclaimer: See Hive Studios floor plans / site plans are intended as an approximate guide only. No representations or warranties are given or intended and any person using this information other than as a guide should always rely on their own enquiries. See Hive Studios property marketing services / Photography, Floor plans, Video, Aerial photography / <https://beehive.studies.com.au>



APPROXIMATE AREAS

INTERNAL FLOOR SPACE - 115m²

EXTERNAL FLOOR SPACE - 18m²

GARAGE/CARPORT - 36m²