



17 Flintwood Street POTTSVILLE NSW

4 2 2

This quaint family home in Stage 1 of Koala Beach estate of Pottsville is elevated from surrounding properties and boasts stunning reserve views.

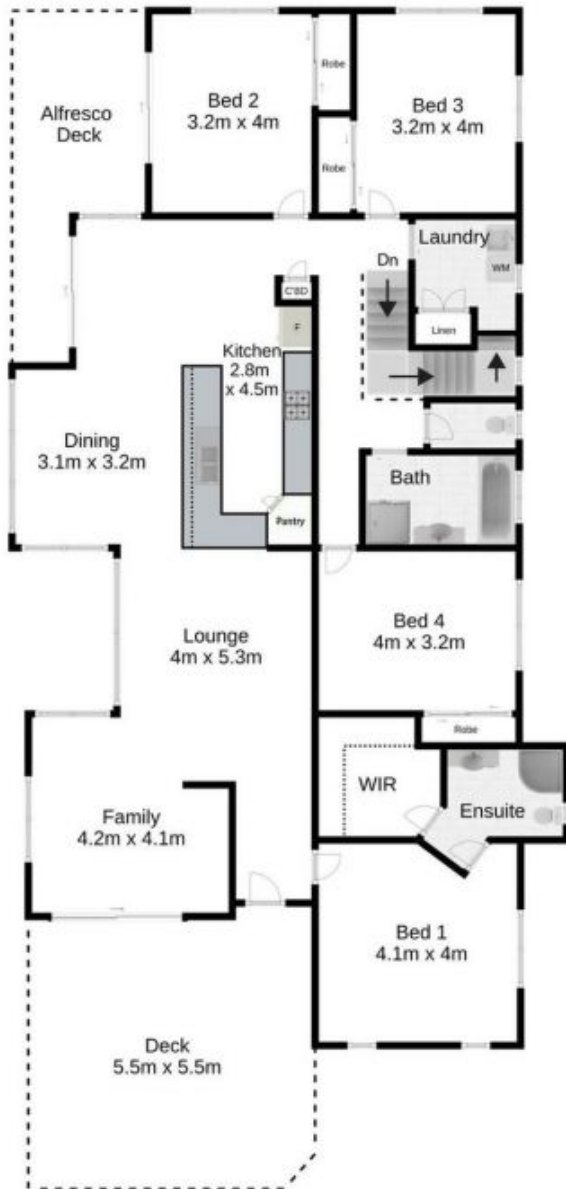
In design the home features:

- 4 carpeted bedrooms, master with ensuite and large walk in robe, secondary rooms with built ins.
- Tiled open plan living, with the kitchen the central point of the home, stainless appliances, double fridge space and double sink.
- Carpeted lounge area.
- Glass sliding doors lead to the expansive front timber deck and rear undercover timber decks with a beautiful outlook to the nature reserve.
- Family bathroom, with separate toilet and laundry.

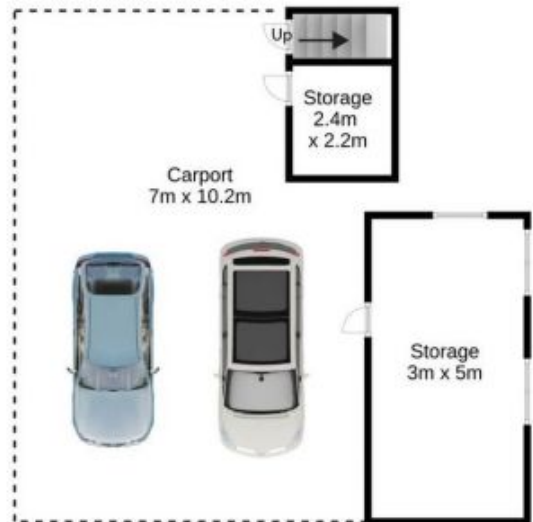
Type : House
Land Size : 607 sqm
View : <https://www.pottsvilleproperties.com/sale/nsw/northern-rivers/pottsville/residential/house/7645295>

[For full version visit the website](https://www.pottsvilleproperties.com)

Upper Level



Lower Level



17 Flintwood Street - Pottsville

0 1 2 3 4 5
Scale in meters. Indicative only.

This floorplan is for illustration purposes only and no warranty is given to its accuracy. Purchases are advised to carry out their own investigations. Produced by Friday Hut Studios.

