



2 Mylestom Circle POTTSVILLE NSW

3 2 2

This stunning freestanding home in Seabreeze Estate of Pottsville, truly has the WOW FACTOR in both design practicality and quality inclusions.

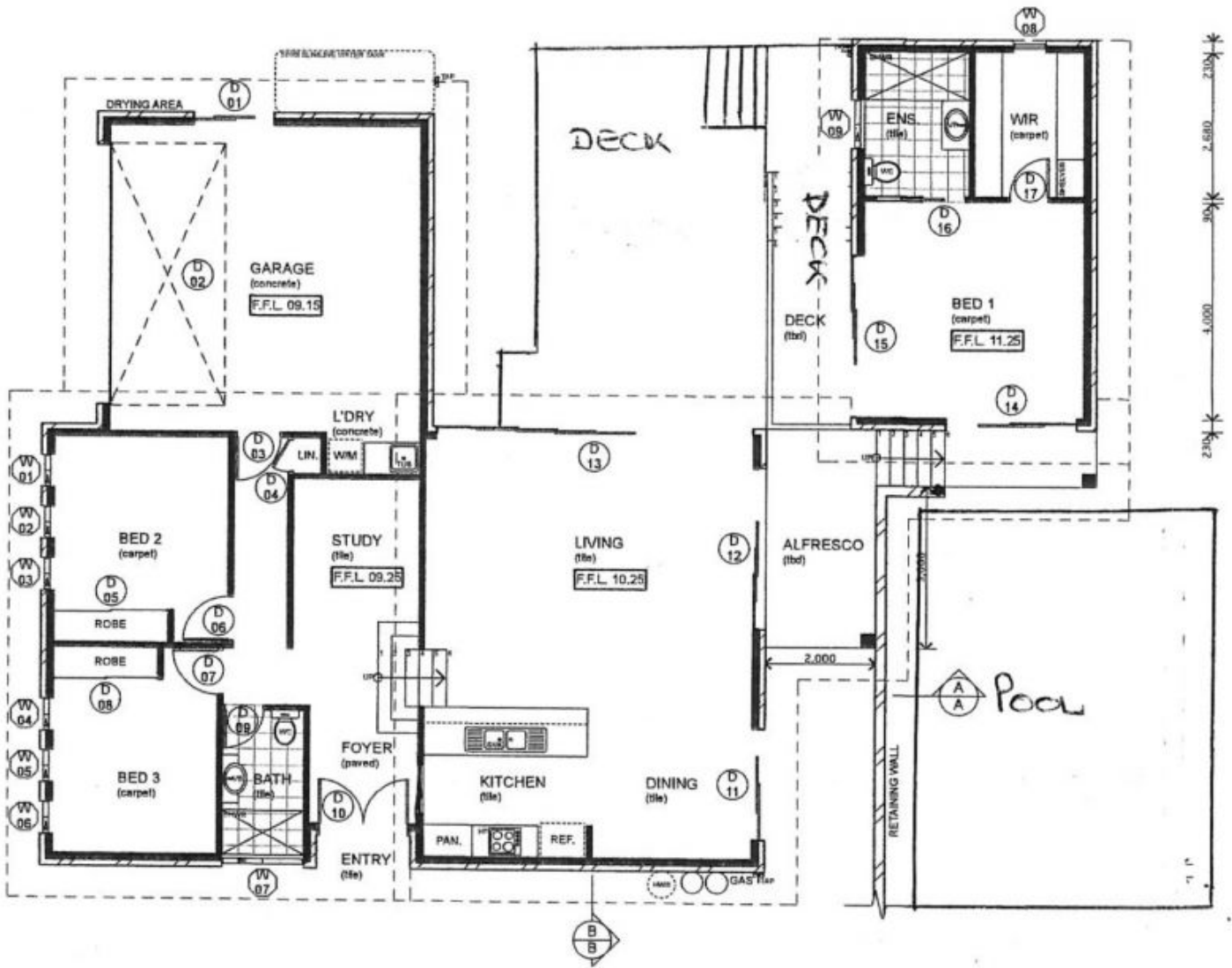
Throughout the property the peaceful ambiance is alluring as soon as you enter through the timber double door entrance, with the clean lines, modern features and lush tropical gardens surrounding the home.

On a 698sq.m. Corner elevated block, the layout of this indoor/ outdoor tri-level home is positioned perfectly to create ultimate privacy and a light breeze air-flow around the home.

On the higher level- the carpeted master bedroom (with

Type : House
Land Size : 698 sqm
View : <https://www.pottsvilleproperties.com/sale/nsw/northern-rivers/pottsville/residential/house/7645300>

[For full version visit the website](https://www.pottsvilleproperties.com)



2302
 2.050
 2.050
 4.000
 2302

2302 L 1 150 2011 1000 1100 1200 1300

