



2/30 Coronation Avenue POTTSVILLE NSW

2 2 1

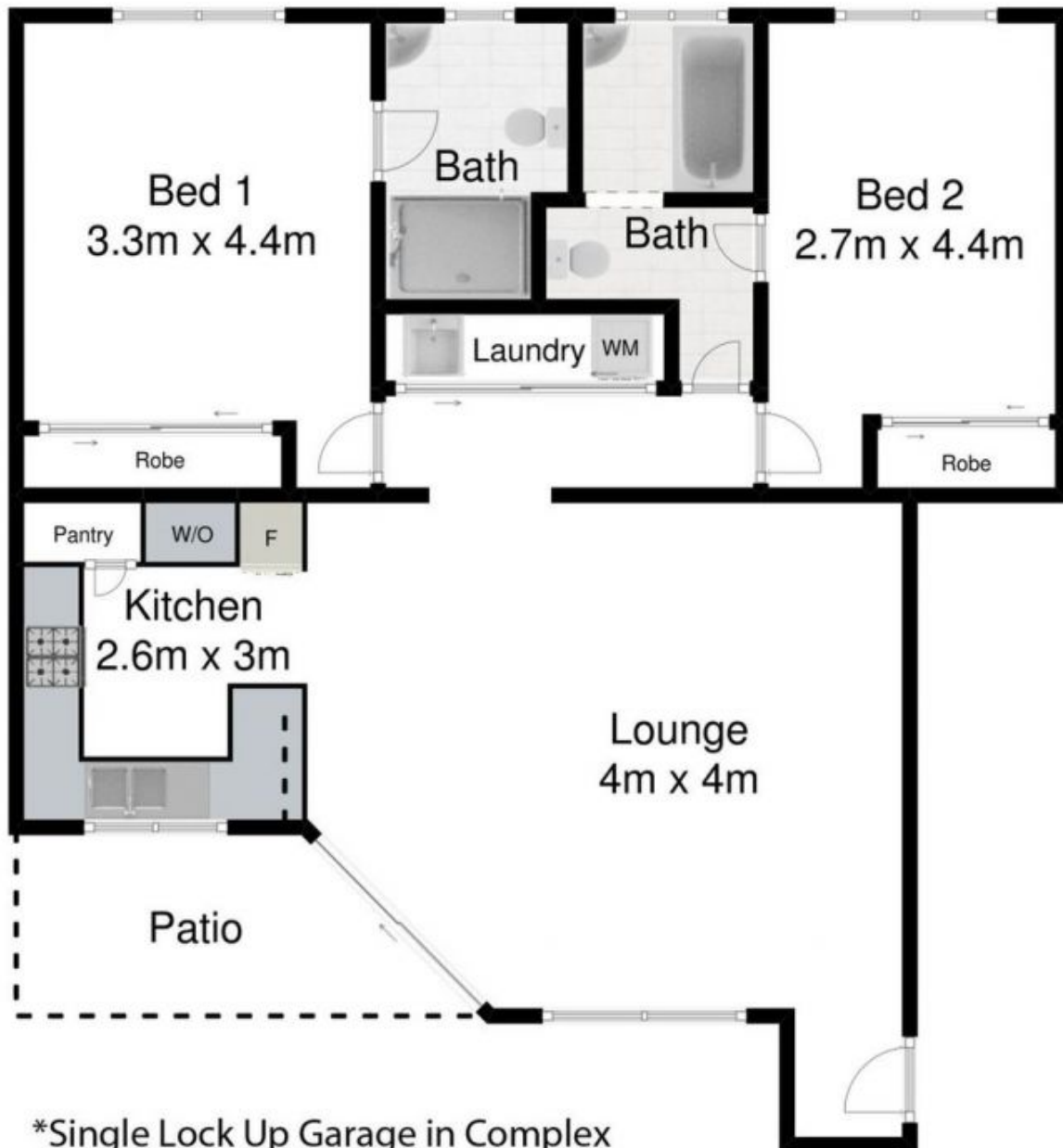
This tidy ground floor unit is situated in an amazing location in the centre of Pottsville village. Less than 100m to the esplanade of shops, bustling cafe's and all amenities, convenience PLUS! Furthermore it's only approximately 500m to the pristine estuary and beautiful beach!

**Type** : Unit  
**View** : <https://www.pottsvilleproperties.com/sale/nsw/northern-rivers/pottsville/residential/unit/7645302>

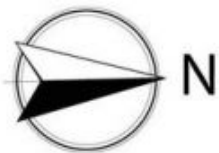
In design the unit features:

- Two bedrooms with built-in wardrobes
- Two bathrooms
- Secure underground parking with a single lock-up garage
- Carpeted loungeroom with air conditioning
- Modern kitchen with granite benchtop and stainless steel appliances
- Glass slider door leading to sunny tiled patio
- Security screens throughout

[For full version visit the website](https://www.pottsvilleproperties.com)



## 2/30 Coronation Avenue - Pottsville



0 1 2 3 4 5

Scale in meters. Indicative only.

This floorplan is for illustration purposes only and no warranty is given to its accuracy. Purchases are advised to carry out their own investigations.  
Produced by Friday Hut Studios.