



**2/23-27 Coronation Avenue POTTSVILLE NSW**

3 3 2

This terrific townhouse is truly a class above its competitors, with the village location and design features being equally impressive. Throw a towel over your shoulder, grab your morning coffee from one of the local cafes and walk footsteps to the ocean or estuary for a morning swim. Set amid tropical gardens in a small well maintained complex offering excellent returns to an astute investor or live the seachange lifestyle from this perfect property.

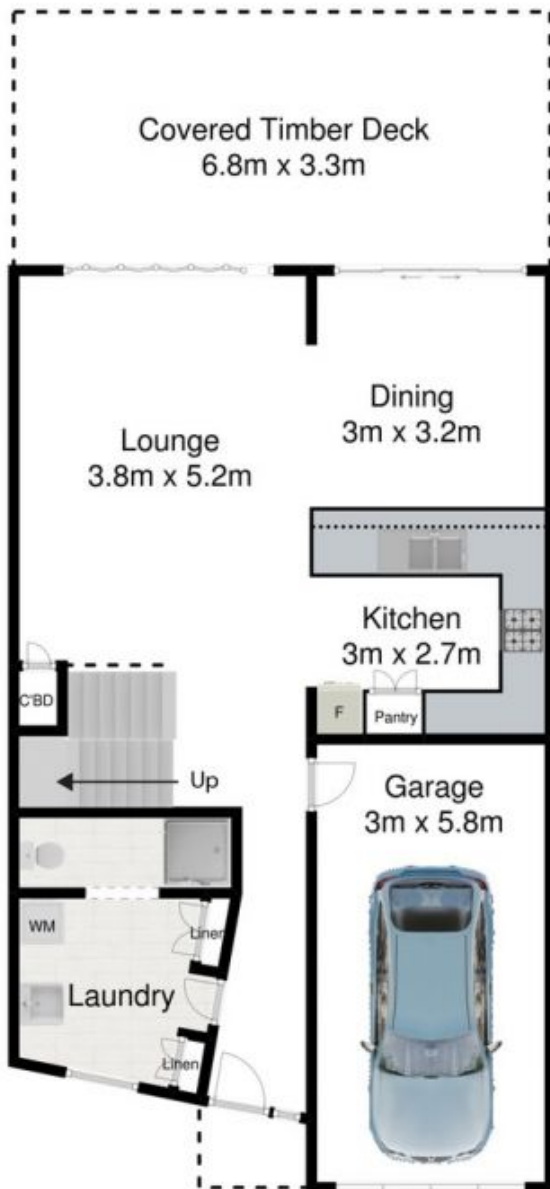
**Type** : Townhouse  
**Price** : \$ 550,000  
**View** : <https://www.pottsvilleproperties.com/sale/nsw/northern-rivers/pottsville/residential/townhouse/7645312>

**Property Features and Inclusions**

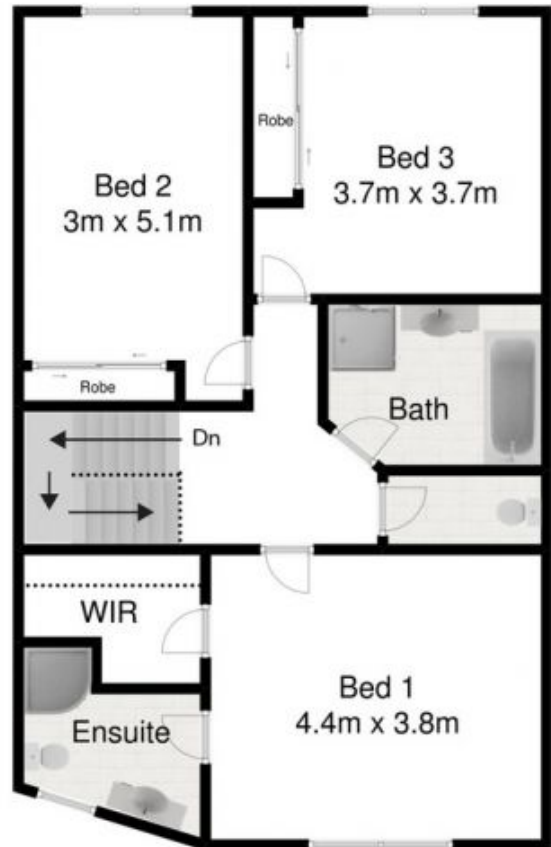
- Enormous Master bedroom, offering raked ceiling, large walk in robe & deluxe ensuite
- 2 additional over-sized bedrooms with built in wardrobes & air-conditioning

[For full version visit the website](https://www.pottsvilleproperties.com)

## Ground Level



## Upper Level



## 2/23-27 Coronation Avenue - Pottsville

0 1 2 3 4 5

Scale in meters. Indicative only.



This floorplan is for illustration purposes only and no warranty is given to its accuracy. Purchases are advised to carry out their own investigations. Produced by Friday Hut Studios.