



1/24 Elanora Avenue POTTSVILLE NSW

3 2 2

WOW..... That's the first thought that comes to mind when you walk through this elegant beach-side home.

Architecturally designed with stunning interior finishes, this is a property that would slip seamlessly into the pages of any vogue living magazine. The sophistication of design is evident right down to the smallest detail. Whether you see it in the feathered finishing of the concrete floor, the brass inlay in the custom joinery or the Tetris-like precision of the stone feature wall, there is a meticulous attention to detail throughout the property that even the most fastidious buyer will appreciate.

The property's floorplan is versatile enough to accommodate buyers at many different stages of life. Set

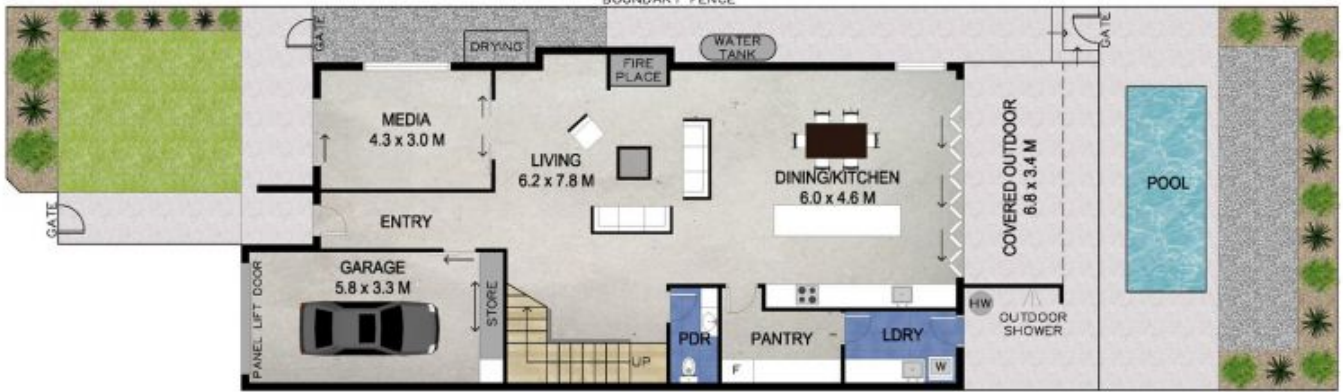
**Type** : House

**View** : <https://www.pottsvilleproperties.com/sale/nsw/northern-rivers/pottsville/residential/house/7645333>

[For full version visit the website](https://www.pottsvilleproperties.com)



UPPER LEVEL



LOWER LEVEL



Scale in metres. Indicative only. Dimensions are approximate. All information contained herein is gathered from sources we believe to be reliable. However we cannot guarantee its accuracy and interested persons should rely on their own enquiries.

LOWER : 140 SQ.M.  
 UPPER : 136 SQ.M.  
 OUTDOOR : 23 SQ.M.



1/24 Elanora Avenue, Pottsville