



15 Marsupial Drive Pottsville NSW

4 3 4

THE LIFESTYLE

There is a saying, "Don't just follow your dreams, chase them down, grab hold and don't let go."

It's a reminder to act without hesitation and avoid missing out. In this instance, the prize is a lifestyle; an opportunity to live in your dream house, in your dream community, experiencing the beauty of your home and your surroundings, from the forest to the sea.

THE LAYOUT

The combination of thoughtful design and flawless execution, this masterfully renovated home offers the epitome of practical living without compromising on style. With 4 spacious bedrooms, 3 beautiful bathrooms, a double lock up garage and further undercover off street parking, there is a living configuration available to service an abundance of buyer requirements.

Price : NEW PRICE \$1.55M
Building Size : 250 sqm
Land Size : 698 sqm
View : <https://www.pottsvilleproperties.com/sale/nsw/northern-rivers/pottsville/residential/house/7799215>



Shannon & Katie Kofoed
02 6676 2997



15 Marsupial Drive, Pottsville



4

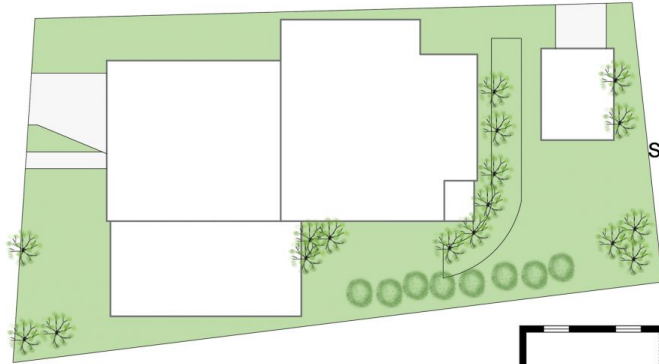


3

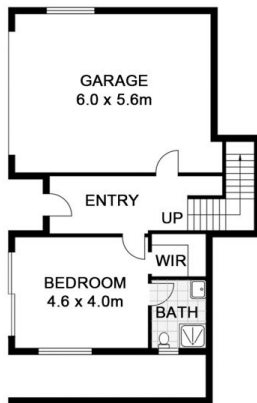


2

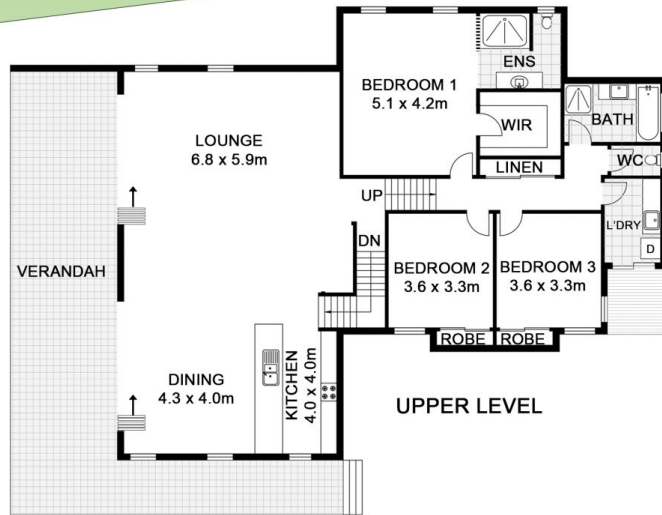
INTERNAL: 239m²



SITE PLAN



LOWER LEVEL



UPPER LEVEL