



13 Roseash Court Pottsville NSW

4 🏠 2 🚗 4 🚗

THE LIFESTYLE

This near new, Hamptons inspired family home sits proudly above one of Pottsville's most prestigious coastal enclaves. The crown jewel of Koala Beach, Roseash Court offers some of the most expansive and captivating ocean and hinterland views in a safe, family friendly cul-de-sac street. Set on the high side of the street, this spectacular home enjoys a private aspect, looking over the estate to the reserve and sea beyond. Whether sitting by the pool, entertaining in the kitchen, or lazing in bed, the views are mesmerizing, a symphony of greens and blues blurring the lines between the home and its surroundings. At just over 1km to the beach, this beautiful estate is a true coastal hinterland, offering the peace and tranquillity of environmentally protected nature reserves and vacant stretches of pristine beach.

Price : SELLING GUIDE | \$2-2.2M
Building Size : 254 sqm
Land Size : 628 sqm
View : <https://www.pottsvilleproperties.com/sale/nsw/northern-rivers/pottsville/residential/house/7897096>



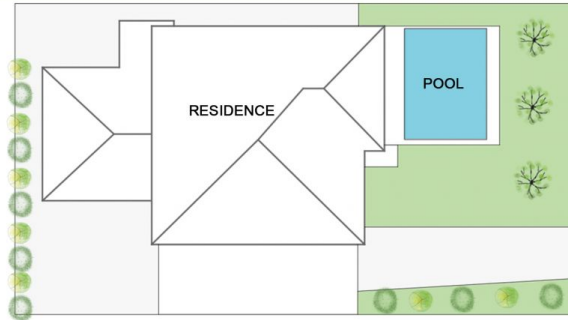
Shannon & Katie Kofoed
 02 6676 2997



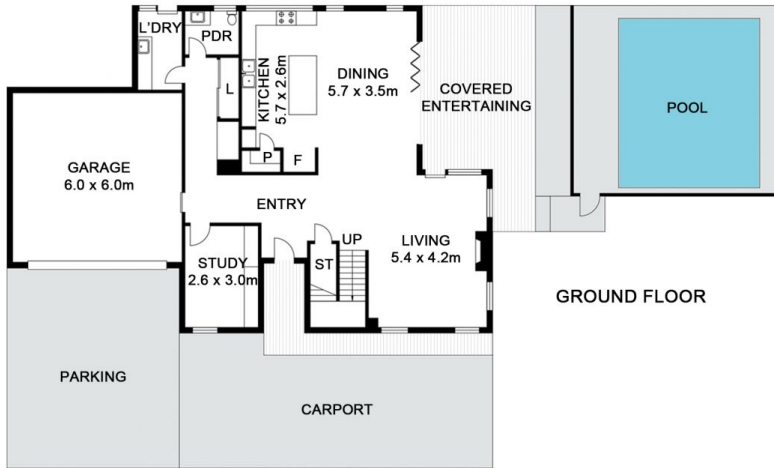
13 Roseash Court, Pottsville

4 2 2

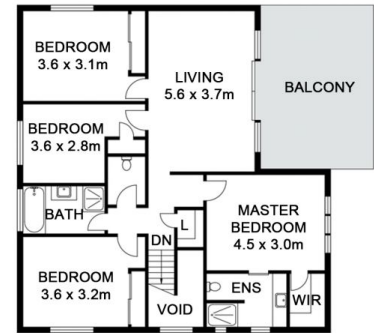
INTERNAL: 254m² EXTERNAL: 101m²



SITE PLAN
(NOT TO SCALE)



GROUND FLOOR



FIRST FLOOR