



**22/3-15 Lennox Circuit Pottsville NSW**

**3**  **2**  **2** 

**THE OPPORTUNITY**

This contemporary 3-bedroom townhouse offers a convenient, low maintenance lifestyle and is an excellent opportunity to secure an entry level family home on the Tweed Coast. Presenting with a light and bright modern finish, the property gives that fresh coastal feel making it sure to be a popular for buyers looking in the area!

Whether you are a family looking to purchase your first home, looking for an investment, or downsizing, this home is for you. Privacy and security are assured with the Parkview complex being gated 24/7. Don't miss out on one of the very few affordable options in the trendy seaside village of Pottsville!

**Type** : Townhouse

**View** : <https://www.pottsvilleproperties.com/sale/nsw/northern-rivers/pottsville/residential/townhouse/8186503>



**Shannon & Katie Kofoed**  
**02 6676 2997**

[For full version visit the website](https://www.pottsvilleproperties.com)



22/3-15 Lennox Circuit, Pottsville



3

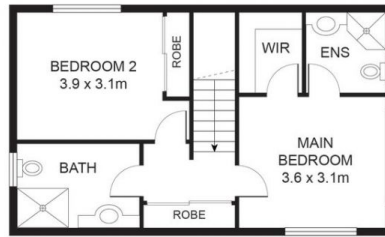


2



2

INTERNAL: 158m<sup>2</sup>



FIRST FLOOR



GROUND FLOOR