



12/3-15 Lennox Circuit Pottsville NSW

3 2 2

THE OPPORTUNITY

This contemporary 3-bedroom townhouse offers a convenient, low maintenance lifestyle and is an excellent opportunity to secure an entry level family home on the Tweed Coast. Position privately in the outer corner of the 'Park View' complex, this substantial townhome has a large wrap around yard and its own back gate for easy access to the footpath and street parking, making it one of the best properties in the complex.

Whether you are looking to purchase your first home, an investment property or downsizing to a low maintenance home in a secure community, this practically designed property is for you. Don't miss out on one of the very few

Type : Townhouse
View : <https://www.pottsvilleproperties.com/sale/nsw/northern-rivers/pottsville/residential/townhouse/8216499>



Shannon & Katie Kofoed
 02 6676 2997

[For full version visit the website](https://www.pottsvilleproperties.com)



12/3-15 Lennox Circuit, Pottsville



3

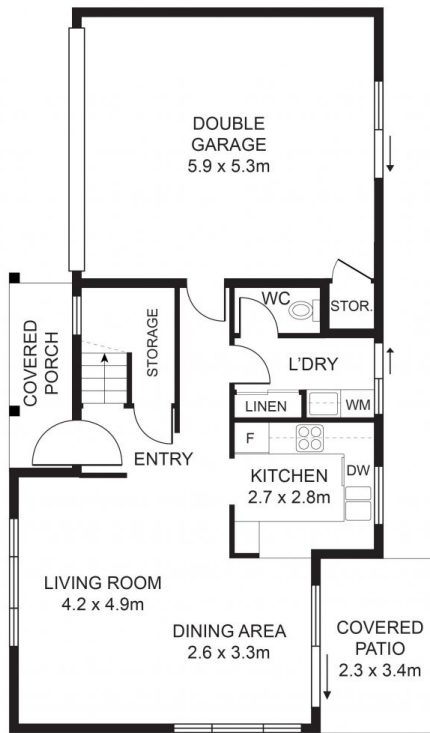


2

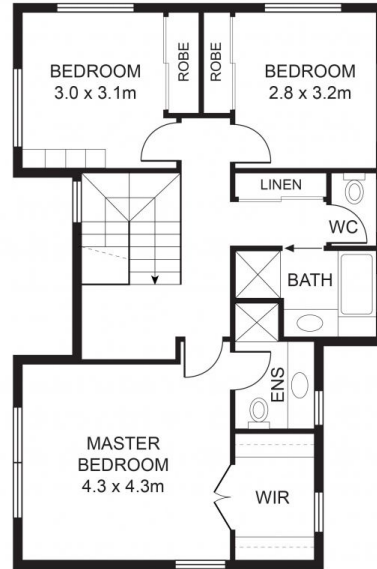


2

INTERNAL: 121m²



GROUND FLOOR



FIRST FLOOR