

1/15 Hampton Court Pottsville NSW

3 2 2

THE LIFESTYLE

Perfectly positioned to embrace the very best of Pottsville Beach living, this beautifully presented three-bedroom duplex offers an enviable lifestyle just steps from the calm waters of Mooball Creek and moments from the beach. With no body corporate fees or restrictive strata rules, this is a rare opportunity to enjoy the space, privacy and independence of duplex living in one of the area's most tightly held locations.

Whether you're seeking a relaxed coastal home, a low-maintenance downsizer or a smart investment, this property delivers lifestyle, flexibility and long-term appeal in equal measure.

[For full version visit the website](https://www.pottsvilleproperties.com)

Type : Semi Detached
Price : \$ 1,245,000
Building Size : 153 sqm
Land Size : 487 sqm
View : <https://www.pottsvilleproperties.com/sale/nsw/northern-rivers/pottsville/residential/semi-detached/8576714>



Shannon And Katie Kofoed
 02 6676 2007



1/15 Hampton Court, Pottsville



3

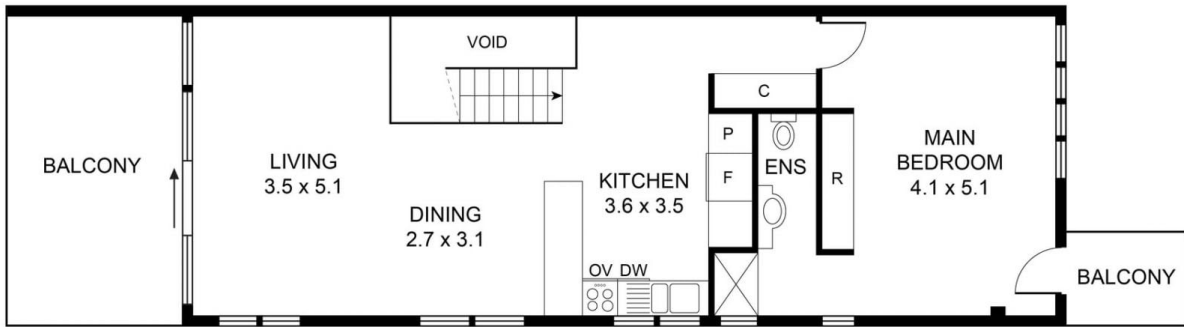


2

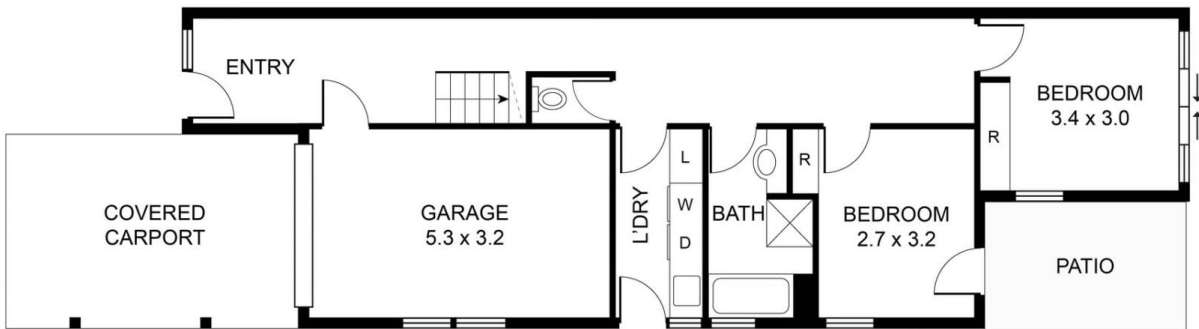


2

INTERNAL: 153m²



FIRST FLOOR : 78m²



GROUND FLOOR : 75m²